



Installation Training Report

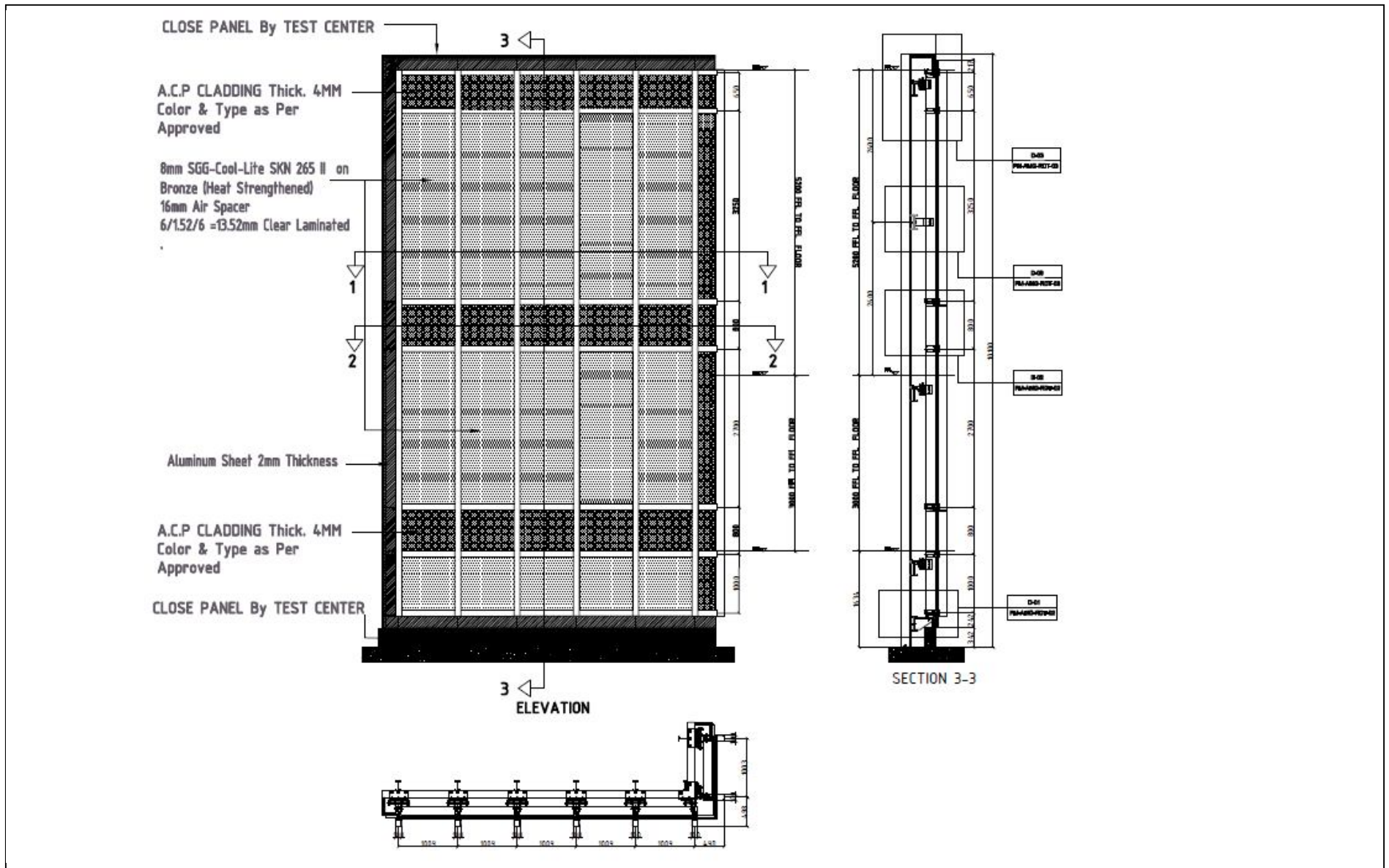
Subject: Installation training of Schuco Male-Female Unitized Curtain Wall PMU @ Exova
Project: Rafal Living Tower, Riyadh
Customer: AMG - Advanced Manufacturing for Metal & Glass Co, Dammam
Report by: Motasem Husni, Customer Service Manager, Schüco Middle East
Date: June, July 2018
CPS Number: 1520929

SCHÜCO

Rafal Living Tower, Riyadh



The installation works: the PMU



The installation works: The panels



The panels

The installation works: Fixing the starter gutter profile



The installation of the starter gutter profile

The installation works: Fixing the starter gutter profile



At the bottom joint of the panels, additional coupling profiles are added in the starter gutter for more rigidity of the installed panels (yellow arrows)

Foam material was added under the joint of the panels for better airtightness (blue arrow)

The installation works: Fixing the starter gutter profile



The starter gutter profile was filled with water to check the leakage from the fixing.

The top of the panels was also tested in the same way.

The installation works: Fixing the starter gutter profile



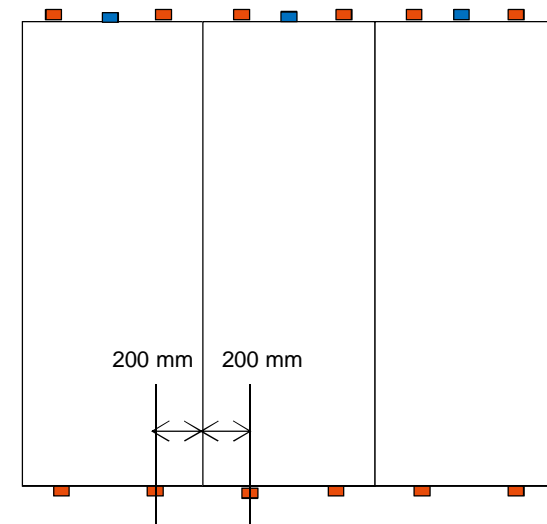
Notching the continuous gasket
200mm (Red) offset of the joint
between the panels.

2 no. / panel

The starter gutter profile has drainage
slot under the center of each panel.

The top of the panels has 1 drainage
slot in the center (Blue)

The continuous gasket on the top of
the panels is notched in the same way
like the gutter



The installation works: end dams



The sides of the starter gutter and the top of the panels must have end-dams

The installation works: The installation and aligning of the panels



Installing and aligning the panels

The installation works: top joints



The top joints of the panels are sealed with coupling profile and Schuco Flex

The installation works: top joints



All top joints of the panels are sealed with coupling profile and Schuco Flex

The outer joints (in addition to sealant) are sealed with Schuco Butyl tape.

The installation works: panels joints



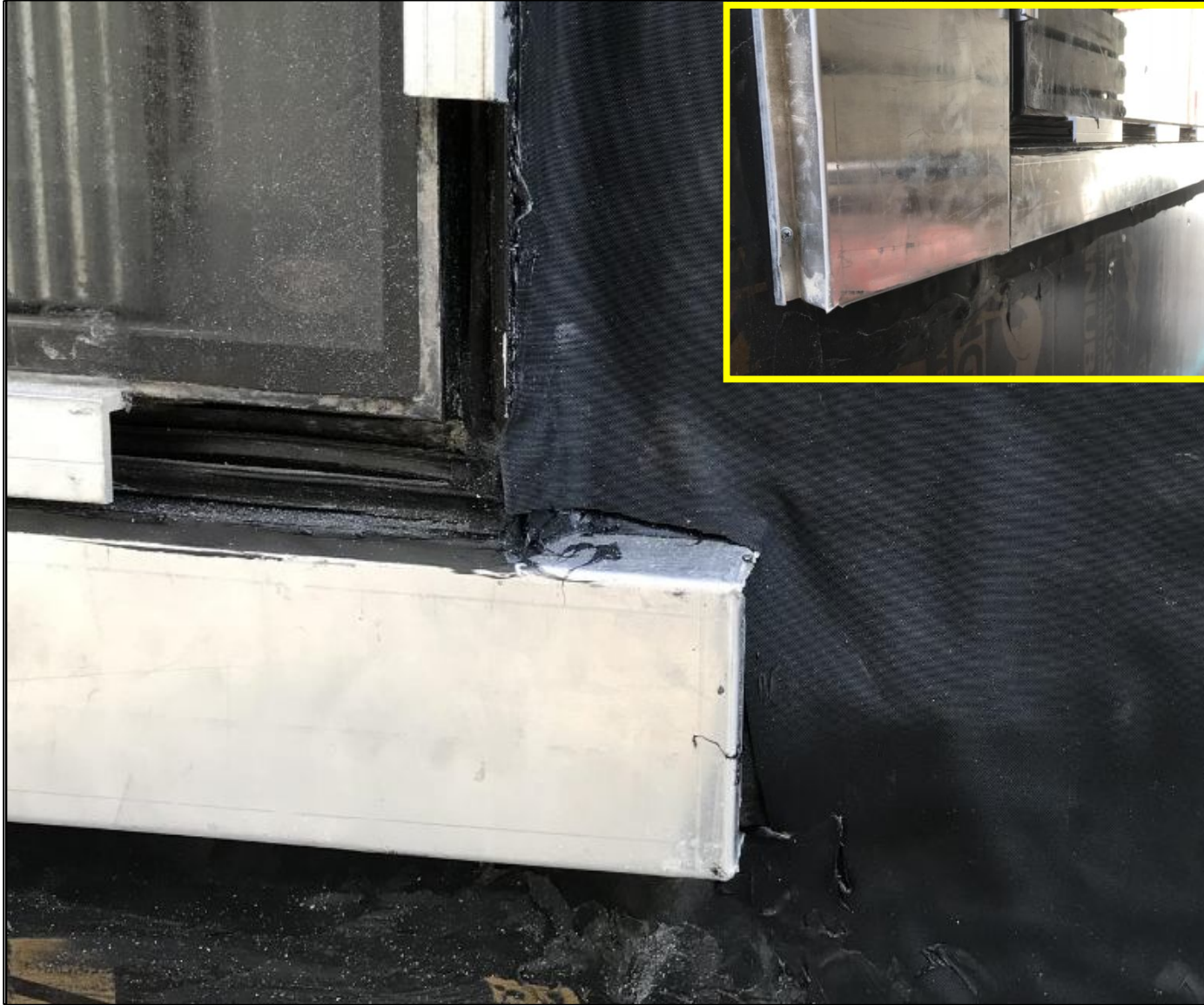
The gasket joints are sealed with Schuco Flex

The installation works:



Installing all panels

The installation works: WPM and flashing



Fixing the water proofing membrane and the flashing

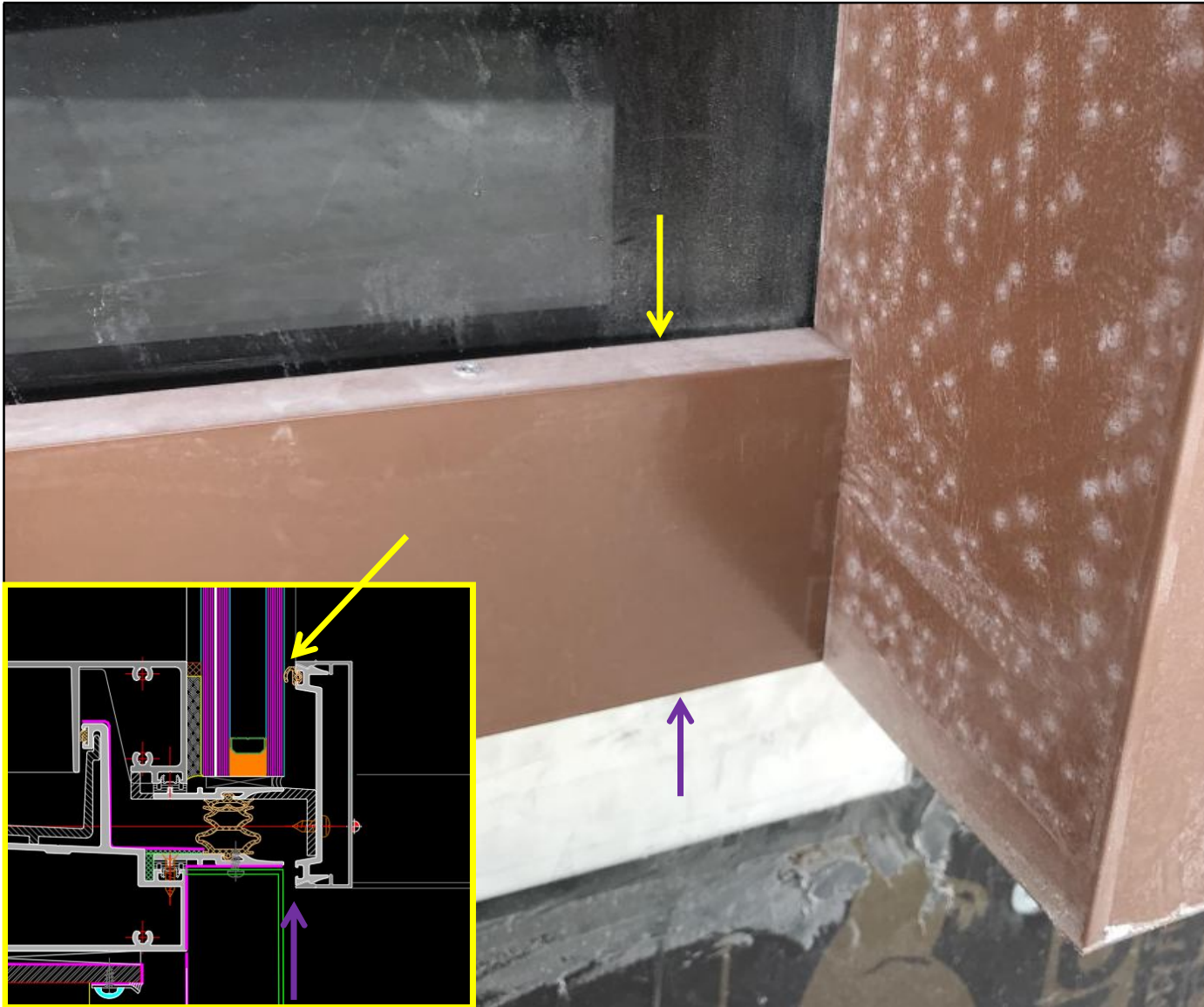
The installation works: decorative features



Fixing the vertical decorative features and the horizontal covers

The bottom covers have drainage holes

The installation works: horizontal cover caps



The horizontal pressure plate profiles at the stack joints have only the top line of the gasket (yellow), the bottom line has no gasket (blue).

The installation works: inner joints



Sealing the bottom joints with Schuco Flex

The installation works: inner joints



During the first static water test, there was water leakage, coming from the sides of stack joints at the end dams (dashed line)

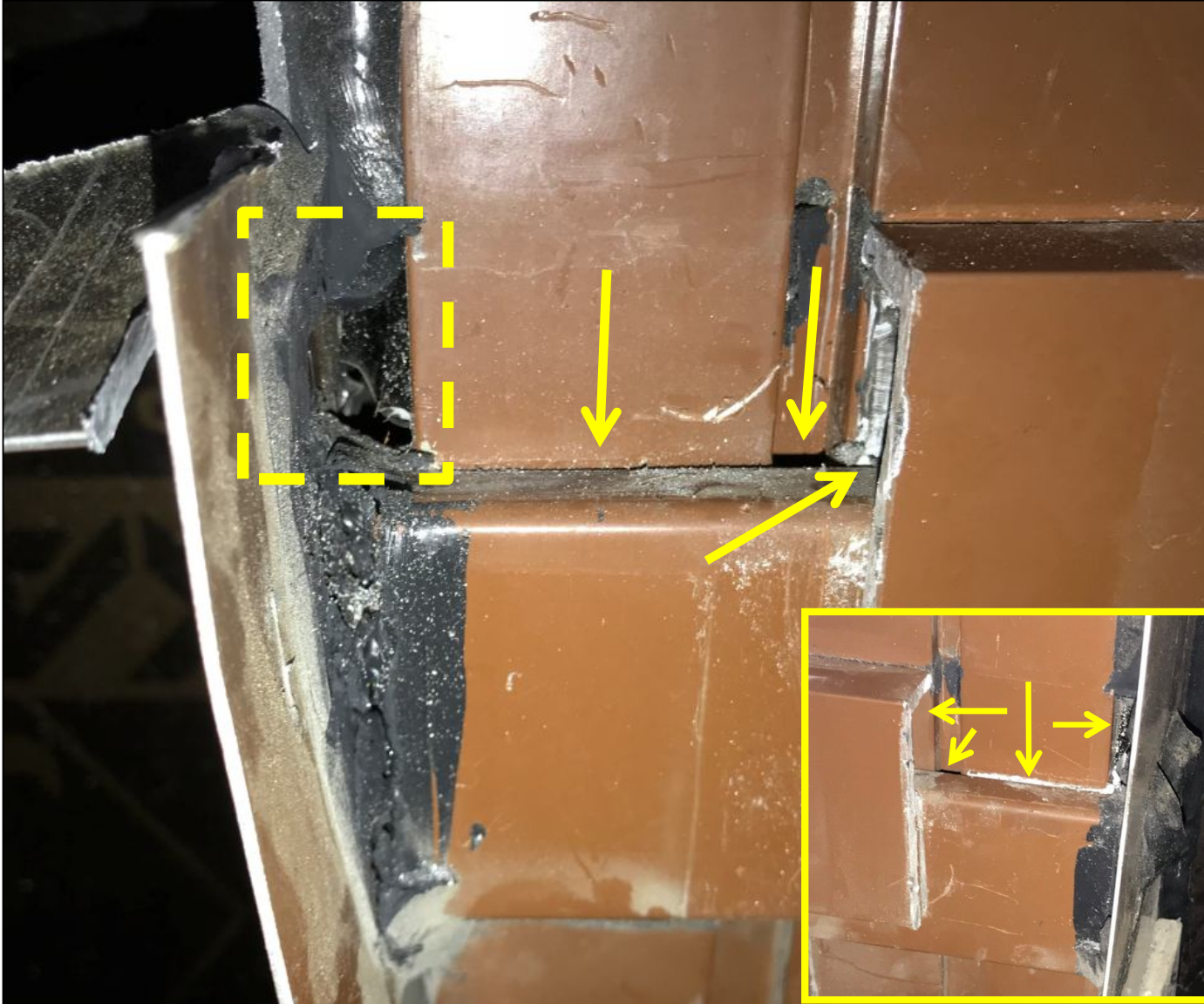
The installation works: inner joints



Cutting the skirting profile to check the water leak

This was done at all stack joints end dams, on right and left sides

The installation works: inner joints



The stack joints and the profiles were not sealed properly and the open joints allowed for air & water to come in freely

The installation works: inner joints



The open joints were sealed with Schuco Flex

The installation works: inner joints



The open joints were sealed with Schuco Flex and the skirting cut pieces were re-sealed back to the joints

The installation works: spandrel area



During the Main test, a big air leakage was observed through the drainage/ventilation slots at the sides of the profiles at the spandrel area. Due to uninstalled back pan sheets, these areas were not sealed to prevent the air leakage.

The installation works: spandrel area

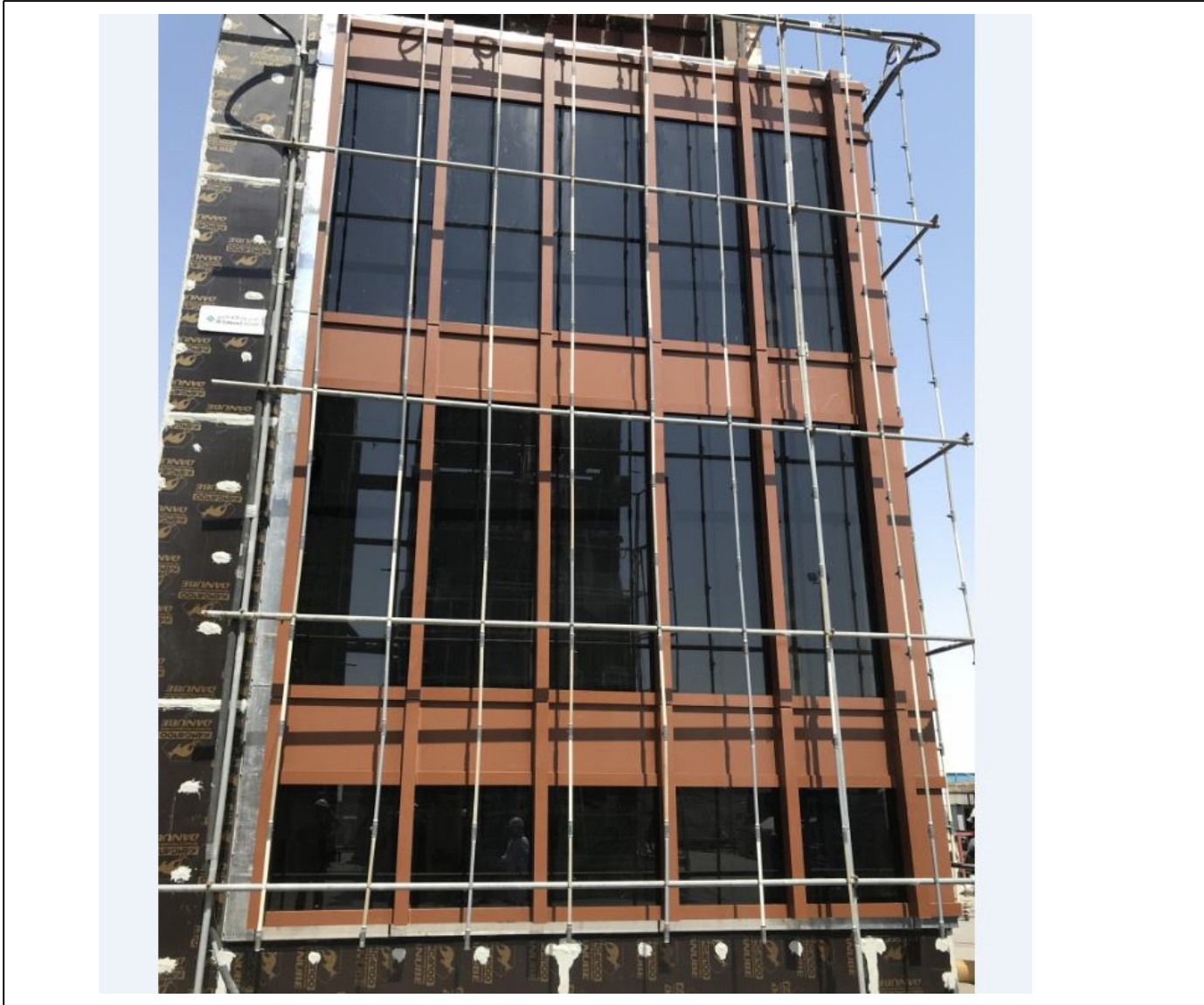


The air leakage was terminated by closing these slots with Schuco butyl tape. This enhanced the performance of the PMU and air leakage was not noticed any more.

Only 2 slots were left open during the water test as requested by the third party MFT.

No water came through during all water tests.

The installation works: The PMU during the main test



All tests were successfully carried out and no failure appeared in any stage of the testing process.

4. Attendees List

Installation Training Sign-in Record

CPS No.: 1520929

Project Name : Rafal Living Tower, Riyadh KSA

Location : Dubai

System: Male – Female UCW

Partner: Advanced Manufacturing for Metal & Glass Co.

NO.	Name	Company	Position	Note
1	Motasem Husni	SCHUCO M.E	Customer Service Manager	
2	Hameed Jalaludeen	AMG	Project Manager	
3	Dumaguing Sandy	AMG	Technician	
4	Picardal Frederic	AMG	Technician	
5	Millet Macario	AMG	Technician	



THANK YOU

Motasem Husni
Customer Service Manager
Technical Department
Motasem.Husni@schucome.com

SCHÜCO